



Ashwell Grange,  
Stroat,  
Chepstow  
Monmouthshire  
NP16 7LS  
Tel (01594) 528224  
Fax (01594) 528211  
[www.reecer.co.uk](http://www.reecer.co.uk)  
email [info@reecer.co.uk](mailto:info@reecer.co.uk)

**Specialist Dealers in the Sale & Purchase of all Portable Buildings and Containers**  
Transport • Storage • Site Work • Refurbishment



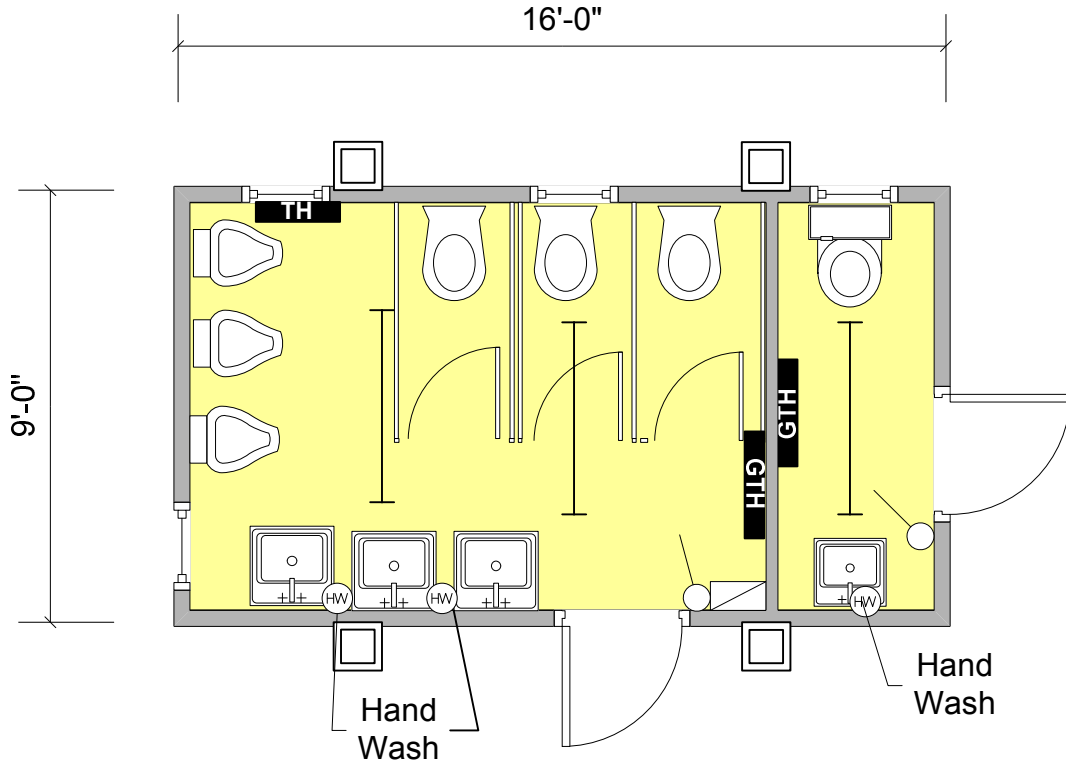
**RS1377**

16' x 9' TEXTURE COATED JACKLEG

3 + 1 toilet block, internally consisting of vinyl flooring, tubular heating and fluorescent lighting through out.

**£2395.00 + VAT Strictly "as is"**

# Unit Information



Key			
	Carpet Tiles		Vinyl Flooring
	Florescent Light		Cat 2 Light
	Consumer Unit		Light Switch
	Water Heater		Bulkhead Light
	Single Switch Socket		Double Switch Socket
	Convector Heater		Guarded Tubular Heater
	Fan Heater		Fused Spur
	Kitchen Sink		Worktop
	Double Sink		Urinal
	Hand Basin		Toilet
	Door		Aperture
	Window		Jackleg

## Specification:

**Doors:** 2 no. External outward opening doors.

**Windows:** 4 no. High level windows with external window guards.

**Lighting:** 3 no. Fluorescent lights.

**Power:** 5 way Hager consumer unit.

**Heating:** 3 no. Tubular heaters.

**Floor Coverings:** Vinyl

**Wall Coverings:** Plasterboard

**Ceiling Coverings:** Plasterboard

## Other Information