

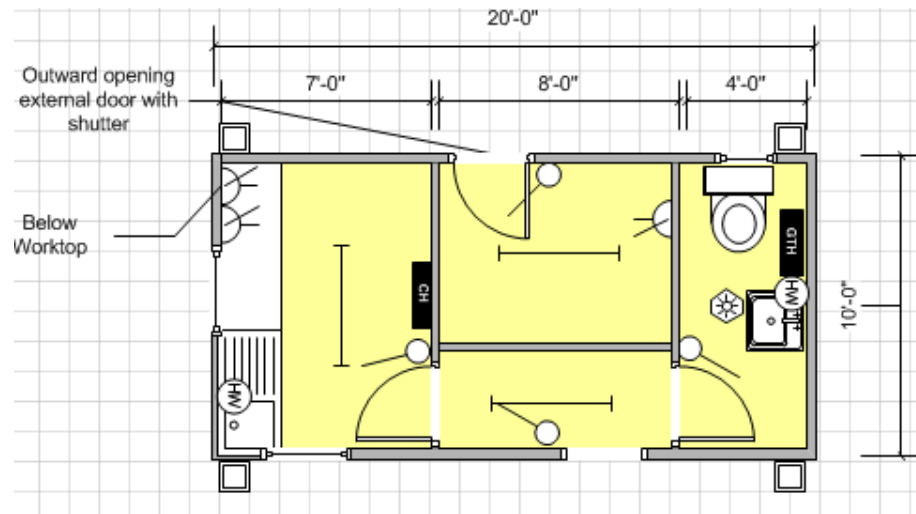
RS 1456

20' x 10' TEXTURE COATED JACKLEG WELFARE UNIT

Newly manufactured partitioned unit to form canteen area, W/C and store. Internally consisting of heating, lighting, power and vinyl flooring throughout.

£7695.00 + VAT

Unit Information



Specification:

Doors:	1 no. External inward opening door. 1 no. Aperture. 2 no. Internal doors.	Heating:	1 no. Convector heater. 1 no. Guarded tubular heater.
Windows:	2 no. Top opening vent windows. 1 no. High level window.	Floor Coverings:	Vinyl.
Lighting:	3 no. Fluorescent lights. 1 no. Moisture resistant light.	Wall Coverings:	Vinyl Faced Ply.
Power:	3 no. Double sockets. 6 Way Hager.	Ceiling Coverings:	Vinyl Faced Ply.

Key			
	Carpet Tiles		Vinyl Flooring
	Florescent Light		Cat 2 Light
	Consumer Unit		Light Switch
	Water Heater		Bulkhead Light
	Single Switch Socket		Double Switch Socket
	Convactor Heater		Guarded Tubular Heater
	Fan Heater		Fused Spur
	Kitchen Sink		Worktop
	Double Sink		Urinal
	Hand Basin		Toilet
	Door		Aperture
	Window		Jackleg