

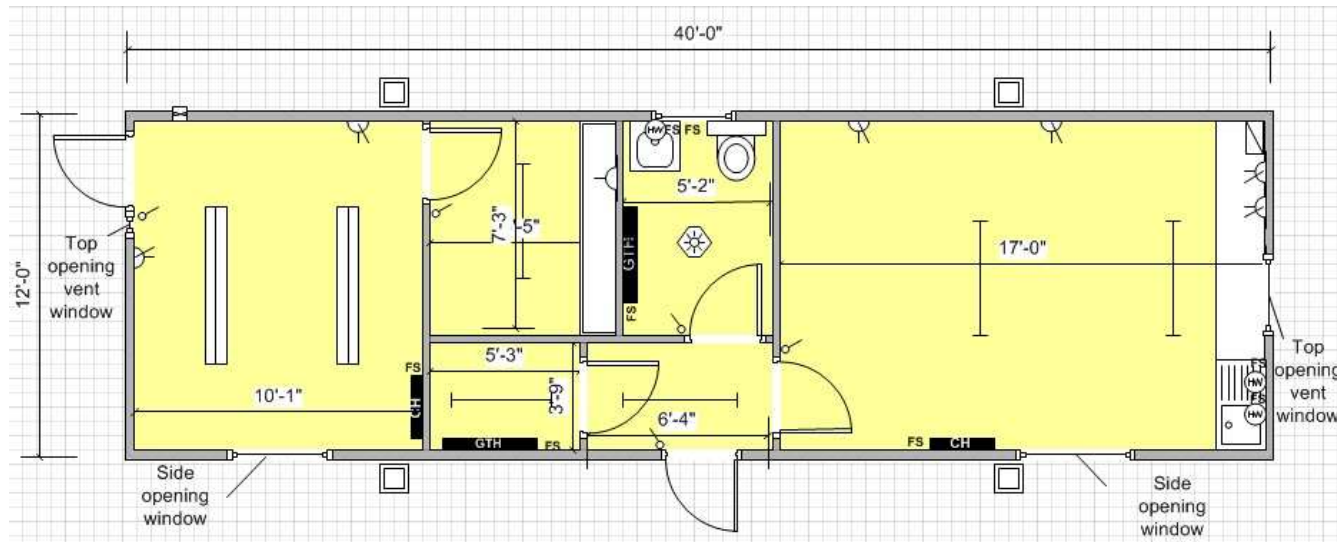
RS 1703

40' x 12' JACKLEG OFFICE WITH CANTEEN AND STORES.

This externally clad jackleg unit is partitioned to form a spacious office, a canteen, a w/c area and 2 stores. The office area has its own entrance and store. It comes complete with cat 2 lighting, electricity sockets and convector heating. Canteen area has double sockets, convector heating and fluorescent strip lighting. The toilet area has moisture resistant lighting, hand wash heater and guarded tubular heater which are thermostatically controlled. The stores have various coat hooks, shelves and fluorescent strip lighting. Vinyl flooring throughout.

P.O.A.

Unit Information



Key

	Carpet Tiles		Vinyl Flooring
	Florescent Light		Cat 2 Light
	Consumer Unit		Light Switch
	Water Heater		Bulkhead Light
	Single Switch Socket		Double Switch Socket
	Convector Heater		Guarded Tubular Heater
	Fan Heater		Fused Spur
	Kitchen Sink		Worktop
	Double Sink		Urinal
	Hand Basin		Toilet
	Door		Aperture
	Window		Jackleg

SPECIFICATION

Doors: 2 no. External outward opening doors.
4 no. Internal doors.

Windows: 3 no. Top opening vent windows.
2 no. Side opening windows.

Lighting: 5 no. fluorescent strip lights.
1 no. moisture resistant bulkhead.
2 no. Cat 2 lighting.

Power: 6 no. Double sockets.
1 no. Single socket.
1 no. Consumer Unit.

Heating: 2 no. Guarded tubular heaters.
2 no. Convector heaters.
1 no. Hand wash heater.
2 no. Hot water heaters.

Floor Coverings: Commercial Vinyl.

Wall Coverings: Plasterboard.

Ceiling Coverings: Plasterboard .

Other Information: External finish: Cladding.
Water Heater: 5 litre water heater

Consumer Unit: Hager 8 Way