



RS1763

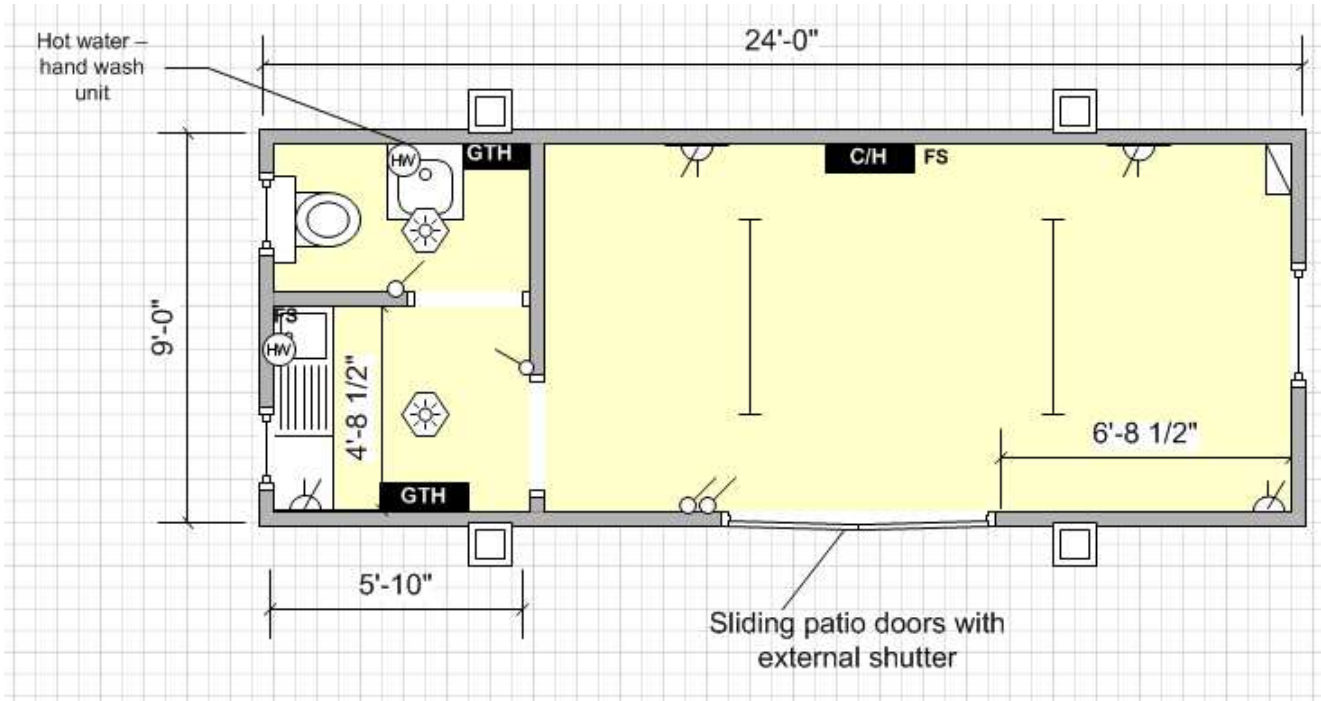
24' x 9' PLASTISOL STEEL JACKLEG SALES SUITE

Excellent condition plastisol steel unit partitioned to form office area, kitchen and WC. Office area consists of fluorescent lighting, convector heating and patio sliding doors complete with external roller shutter. Kitchen and WC include thermostatically controlled guarded tubular heating and moisture resistant lighting. Throughout the unit there is vinyl flooring, plasterboard walls, mono white ceiling and double glazed white PVC windows.

NEW ROOF

£4295.00 + VAT

Unit Information



Key

	Carpet Tiles		Vinyl Flooring
	Florescent Light		Cat 2 Light
	Consumer Unit		Light Switch
	Water Heater		Bulkhead Light
	Single Switch Socket		Double Switch Socket
	Convactor Heater		Guarded Tubular Heater
	Fan Heater		Fused Spur
	Kitchen Sink		Worktop
	Double Sink		Urinal
	Hand Basin		Toilet
	Door		Aperture
	Window		Jackleg

Doors: 1 no. Set of double glazed white PVC sliding patio doors with external shutter.
2 no. Internal Apertures.

Heating: 1 no. Convactor heater.
2 no. Guarded tubular heaters thermostatically controlled.
1 no. Water heater.
1 no. Hand wash water heater.

Other Information: **External finish:** Plastisol steel.

Windows: 2 no. Double glazed white PVC high level windows with external guards.
1 no. Double glazed white PVC top hung window with external slide down shutter.

Floor Coverings: Vinyl.

Lighting: 2 no. Moisture resistant lights.
2 no. Fluorescent lights.

Wall Coverings: Plasterboard.

Power: 4 no. Double sockets.
1 no. Consumer unit.

Ceiling Coverings: Mono white.