



## RS 1817

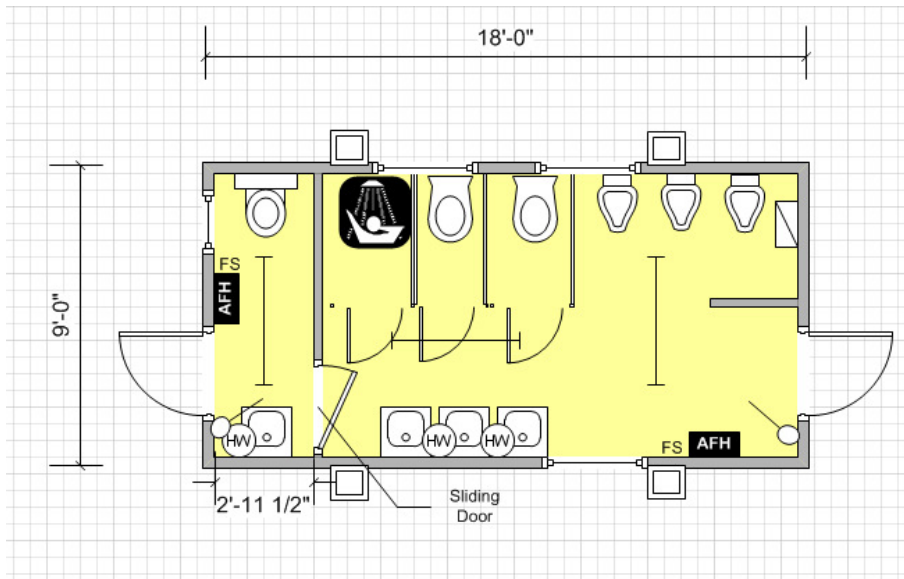
18' x 9' PLASTISOL STEEL JACKLEG

Good condition Plastisol Steel unit partitioned to form shower cubical, male WC facilities and separate single female WC area. Each area with its own entrance or an internal sliding door for access internally to both areas.

Unit is complete with anti frost heaters, external doors with top and bottom locking systems, vinyl flooring, moisture resistant fluorescent lighting and water heaters.

**£4995.00 + VAT**

# Unit Information



| Key |                      |  |                        |
|-----|----------------------|--|------------------------|
|     | Carpet Tiles         |  | Vinyl Flooring         |
|     | Florescent Light     |  | Cat 2 Light            |
|     | Consumer Unit        |  | Light Switch           |
|     | Water Heater         |  | Bulkhead Light         |
|     | Single Switch Socket |  | Double Switch Socket   |
|     | Convector Heater     |  | Guarded Tubular Heater |
|     | Fan Heater           |  | Fused Spur             |
|     | Kitchen Sink         |  | Worktop                |
|     | Double Sink          |  | Urinal                 |
|     | Hand Basin           |  | Toilet                 |
|     | Door                 |  | Aperture               |
|     | Window               |  | Jackleg                |

**Information:** Plastisol Steel.

Complete with jacklegs.

## Specification:

**Doors:** 2 no. External outward opening doors with top and bottom locking systems.  
1 no. Internal sliding door for access to both areas internally.

**Windows:** 4 no. High level windows with external guards.

**Lighting:** 3 no. Moisture resistant fluorescent strip lights.

**Power:** 1 no. Consumer unit.

**Heating:** 2 no. Anti frost heaters.  
3 no. Water heaters.

**Floor Coverings:** Vinyl.

**Wall Coverings:** Plastisol steel.

**Ceiling Coverings:** Plastisol steel.