



RS 1841

As New

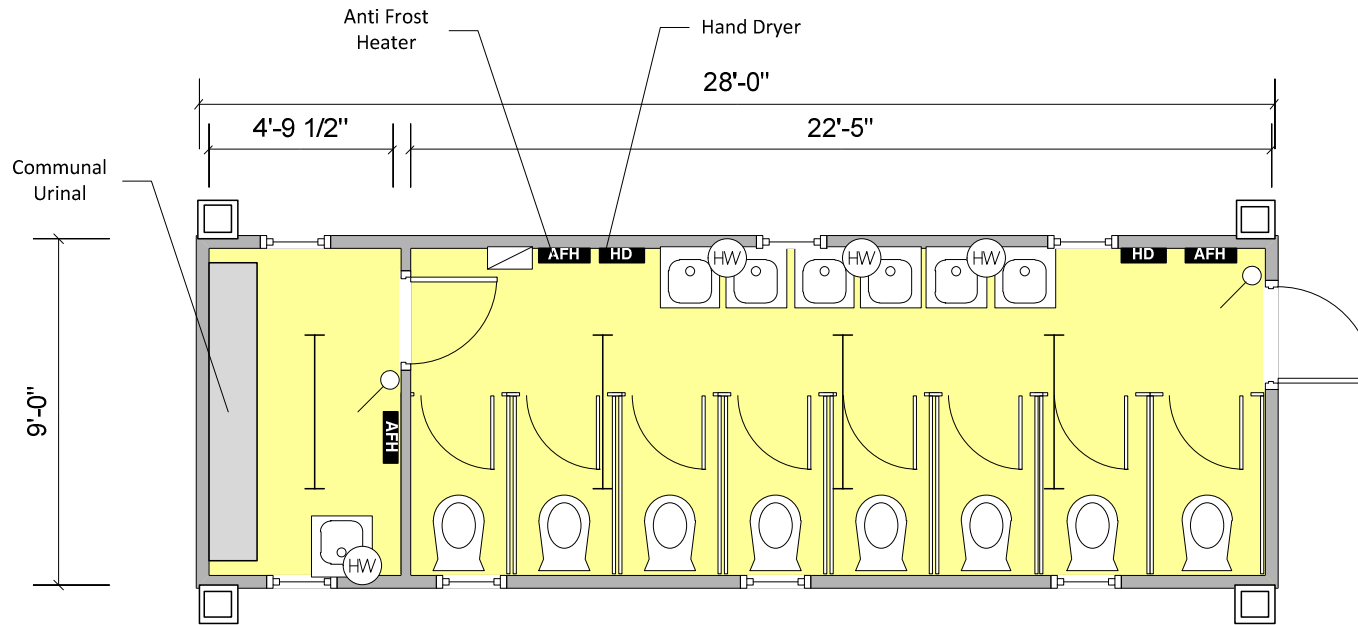
28' x 9' FLAT STEEL ANTI VANDAL WC BLOCK WITH JACKLEGS

Excellent quality unit, partitioned to form ALL MALE 8 bay W/C area and communal urinal area. Internally complete with fluorescent moisture resistant lighting, anti frost heaters and hand dryers, commercial vinyl flooring and high level windows with external window guards throughout.

Various modifications can be made to the unit as required, such as male / female W/C block, Shower & W/C Block. Please Call to Discuss Options.

£9395.00 + VAT

Unit Information



| Key | | | |
|-----|----------------------|--|------------------------|
| | Carpet Tiles | | Vinyl Flooring |
| | Florescent Light | | Cat 2 Light |
| | Consumer Unit | | Light Switch |
| | Water Heater | | Bulkhead Light |
| | Single Switch Socket | | Double Switch Socket |
| | Convector Heater | | Guarded Tubular Heater |
| | Fan Heater | | Fused Spur |
| | Kitchen Sink | | Worktop |
| | Double Sink | | Urinal |
| | Hand Basin | | Toilet |
| | Door | | Aperture |
| | Window | | Jackleg |

Specification:

Doors: 1 no. External outward opening door. .
1 no. Internal door.

Windows: 7 no. High level windows with external guards.

Lighting: 4 no. Moisture resistant florescent strip lights.

Power: 1 no. Consumer unit.

Heating: 3 no. Anti frost heaters.
2 no. Hand dryers.

Floor Coverings: Vinyl.

Wall Coverings: Vinyl faced ply.

Ceiling Coverings: Mono white ply.

Other Information: Flat steel.

Complete with jacklegs to the corners.