

Ashwell Grange,
Stroat,
Chepstow
Monmouthshire
NP16 7LS
Tel (01594) 528224
Fax (01594) 528211
www.reecer.co.uk
email info@reecer.co.uk

Specialist Dealers in the Sale & Purchase of all Portable Buildings and Containers
Transport • Storage • Site Work • Refurbishment



RS 1370

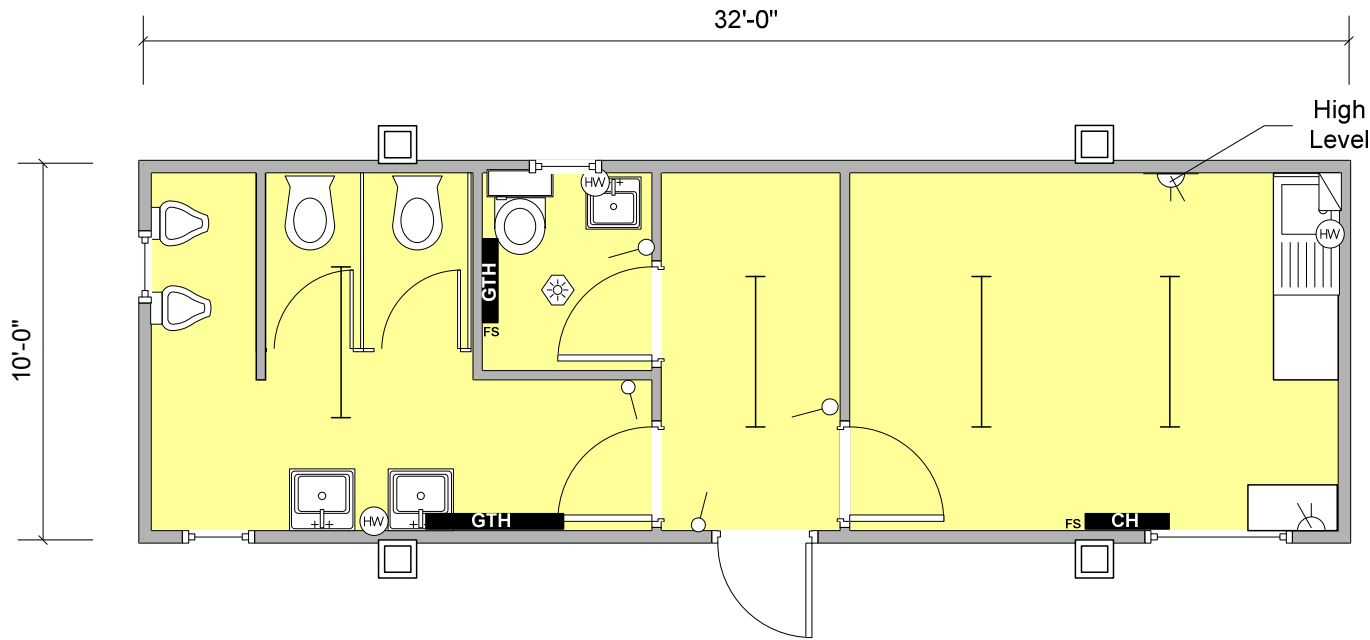
32' x 10' TEXTURE COATED JACKLEG

Recently Painted Externally

Partitioned unit to form 2 + 1 WC facilities and canteen area. Canteen internally consisting of single large top opening vent window, fluorescent lighting and convector heating. WC facilities complete with lighting, guarded tubular heating and high level windows, vinyl flooring through out.

£3695.00 + VAT

Unit Information



Key			
	Carpet Tiles		Vinyl Flooring
	Florescent Light		Cat 2 Light
	Consumer Unit		Light Switch
	Water Heater		Bulkhead Light
	Single Switch Socket		Double Switch Socket
	Convector Heater		Guarded Tubular Heater
	Fan Heater		Fused Spur
	Kitchen Sink		Worktop
	Double Sink		Urinal
	Hand Basin		Toilet
	Door		Aperture
	Window		Jackleg

Specification:

Doors: 1 no. Outward opening external door.

Windows: 1 no. Large top opening vent window.
3 no. High level windows.

Lighting: 4 no. Fluorescent lights.
1 no. Moisture resistant lights.

Power: 2 no. Double sockets.

Heating: 1 no. Convector heater
2 no. Guarded tubular heaters

Floor Coverings: Vinyl

Wall Coverings: Plasterboard

Wall Coverings: Plasterboard

Ceiling Coverings: Plasterboard

Other Information External Finish: Texture Coated